

# Hollywood Board Room

## Video Presentation

You can connect **wirelessly** OR via the **HDMI** input at the table box

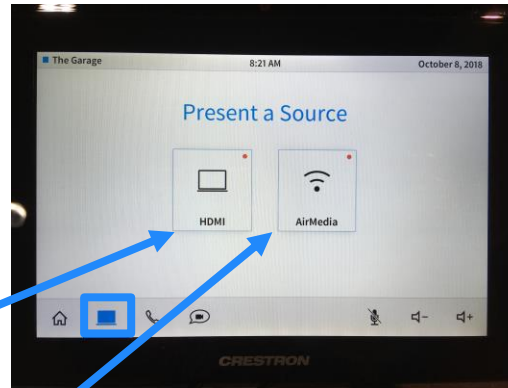
1. Press the **Video** Button

## Wired Video Connection

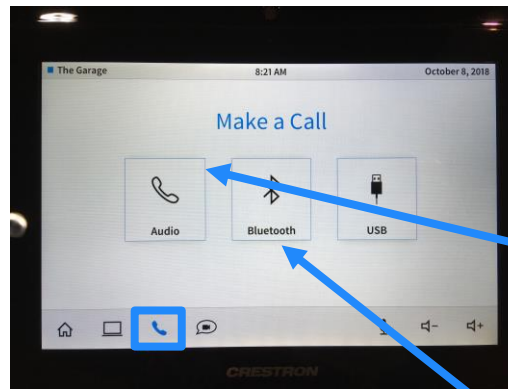
1. Plug into HDMI input at front table
2. Display should automatically switch to laptop video OR select **HDMI** button on screen.

## Wireless Video Connection

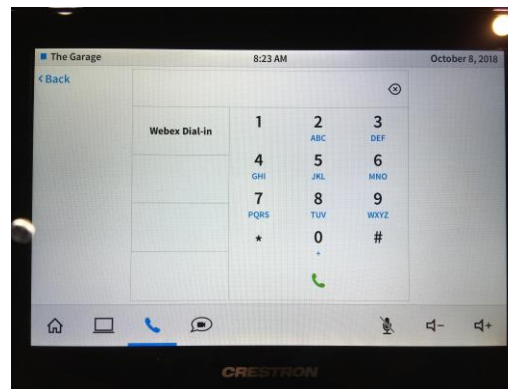
1. Join **Tenant** Wifi
2. Tap Mercury Screen if display is not on (RIGHT)
3. Select **Airmedia** on Screen
4. Download Crestron AirMedia© App from Apple App Store or Google Play Store OR navigate to IP address displayed on screen on laptop browser (Chrome, Edge, Firefox, etc.)



Crestron Mercury (Video Source)



Crestron Mercury (Call Screen)



Crestron Mercury (Dialer Interface)

## Calling

You can make a call on the Crestron Mercury OR through cell phone Bluetooth connection OR through laptop software (i.e. Skype)

2. Press the **Phone** Button

### **Make a call from Mercury**

5. Press the **Audio** button on the **Make a Call** page.
6. Dial a number on the keypad as you would through any speakerphone.

### **Make a Bluetooth call from a Cell Phone**

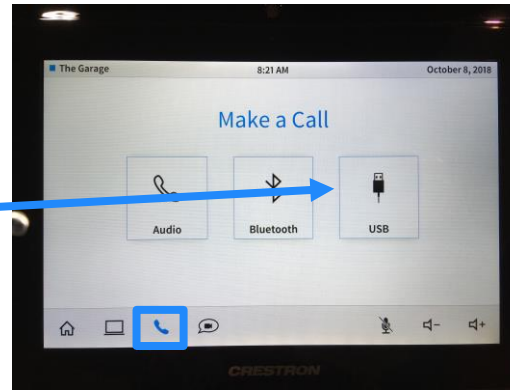
1. Press the **Bluetooth** button on the **Make a Call** page.
2. Pair your phone using your Bluetooth settings.
3. Dial from your phone or through the dialer interface on the Mercury.

## Calling (Continued)

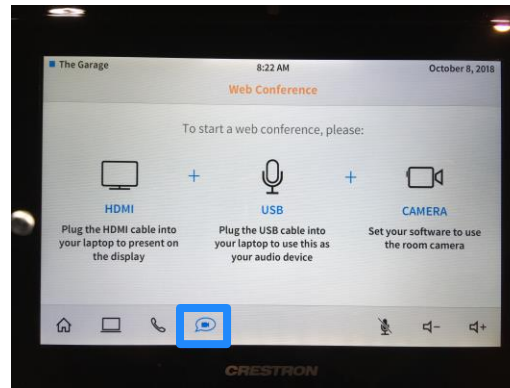
1. Press the **Phone** Button

### Make a call from a connected PC using the Mercury as a Speakerphone

1. Press the **USB** button on the **Make a Call** page.
2. Connect a laptop to the USB connection at the Mercury.
3. Start your software videoconferencing application of choice (i.e. Skype, Webex, etc.)
4. Ensure you have the Mercury selected for the microphone and speaker (which should be selected by default).



Crestron Mercury (Call Screen)



Crestron Mercury (Web Conferencing Screen)

## Web Conferencing with Video

1. Press the **Web Conferencing** Button

### Make a video call from a connected PC using the Mercury as a Speakerphone and the camera above the display

1. Follow the instructions on the screen to connect PC and use videoconferencing software to make a video call.

## Watch TV

1. Use the Comcast remote control
2. Press the input button to select the Set-top cable box as the source.
3. Use the remote to select channels
4. Switch the display back to the Mercury input when finished.